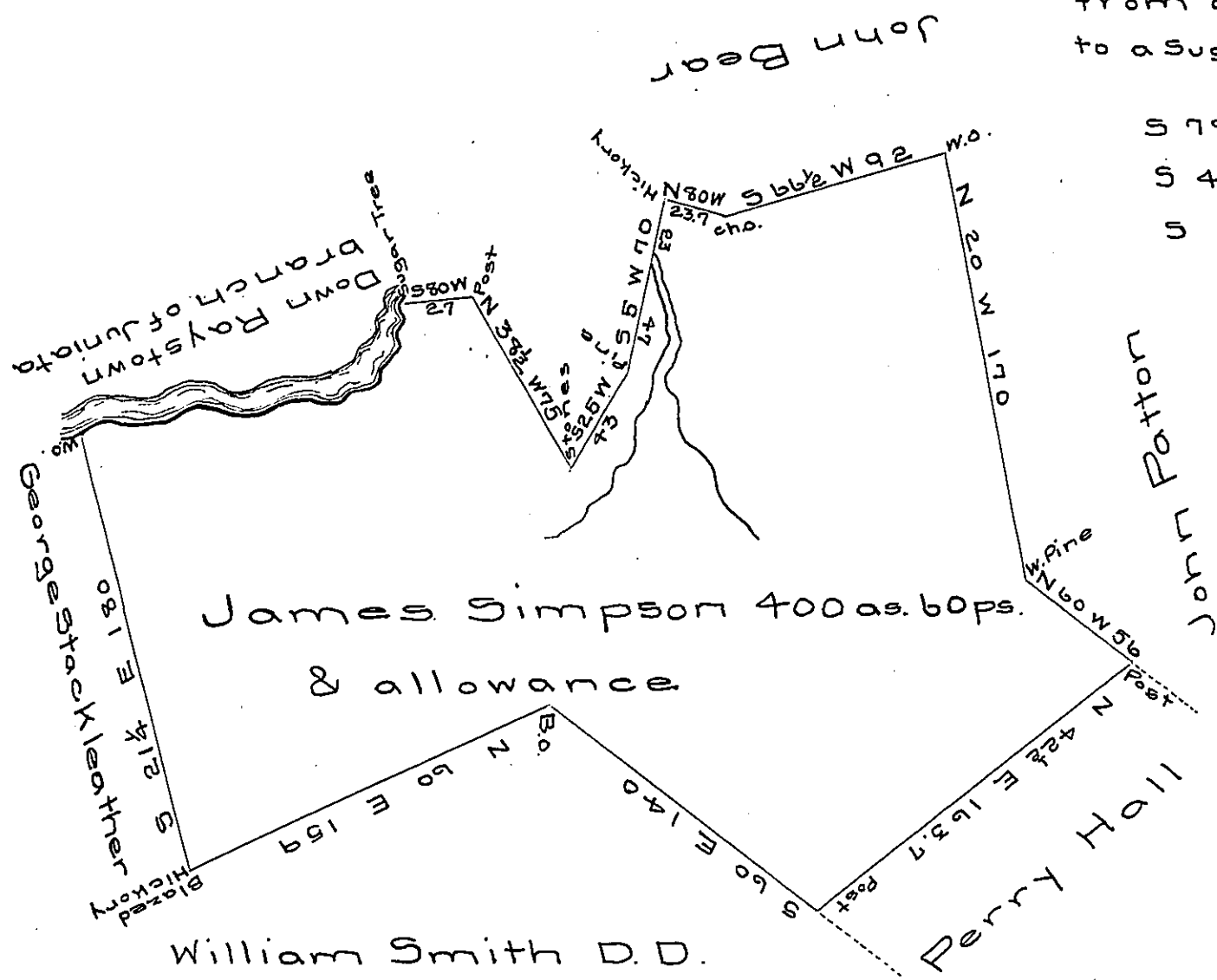


FORM NO. 1.

Courses up the river
from a white oak
to a Sugar tree

S 78 W 110
S 40 W 21
S 4 W 24



Situate in Porter (late Huntingdon township) Hunt-
 ington County containing four hundred acres 60
 perches & allowance including an improvement
 & actual settlement surveyed March 19th 1812 in pur-
 suance of a warrant granted to James Simpson
 dated February 7th 1812.

Jn^o Morrison D.S.

Jacob Spangler Esqr }
 Surveyor General }

IN TESTIMONY that the above is a copy of the original remaining on file in
 the Department of Internal Affairs of Pennsylvania, made
 conformably to an Act of Assembly approved the 16th day of
 February 1833, I have hereunto set my hand and caused
 the Seal of said Department to be affixed at Harrisburg,
 this twenty-eighth day of February 1907.

Loac D. Brown
 Secretary of Internal Affairs.